

## Wireless AP Controller Software



\*The software is free to download and not for sale.

### *AP Management Got Easier and More Cost-effective*

PLANET Smart AP Control is a free and easy-to-use software running on virtual machine which eliminates the OS limitation. All you have to do is configure the correct IP subnet and log in by using the web browser through the secure SSL protocol, and you'll be able to manage multiple wireless access points without accessing them one by one, thus making configuration simpler and faster. For those who already have PoE equipment and just want a basic management utility and managed AP series rather than buying the expensive hardware controller and AP license, PLANET Smart AP Control is beyond doubt the best and cost-effective choice.

### Product Features

- Dashboard: Provides at-a-glance view of system and wireless network status
- Control: Simplifies multi-AP provisioning through single UI
- Floor Map: Locates actual devices onto map to reflect real signal coverage
- Analysis: Easy to monitor the traffic statistics of APs and clients by real-time data or charts
- Cost: Absolutely free, no additional hardware controller, annual subscriptions, or AP license fees is required
- Flexibility: Operating on virtualization enables supporting across different platforms
- Scalability: Supports 10 floor maps, 32 profiles, 32 AP groups, 256 managed APs and 5000 concurrent users



The key features at a glance:

- AP Discovery: To discover managed APs available and allow grouping to accelerate APs management.
- Profile Creation: Capable of defining multiple profiles before applying to APs depending on specific properties.
- Batch Provisioning: Enabling multiple APs to be configured and upgraded at one time by using the designated profile.
- Coverage Heat Map: Real-time signal coverage of APs on the user-defined floor map to optimize Wi-Fi field deployment.
- Maximum Scalability: Up to 10 Floor Maps, 32 AP Groups, 32 Profiles, 256 Managed APs and 5000 Clients



The Smart AP Control currently supported managed AP series includes: Indoor Managed Access Points, and Outdoor Managed Access Points.

*Watch Over Wireless Network within Minutes*

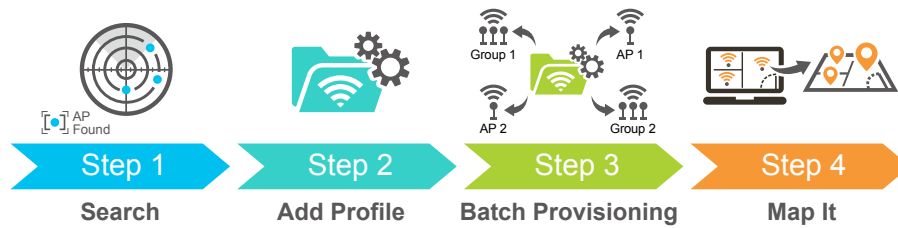
The dashboard presents a portal-like view, providing at-a-glance and efficient summary for your wireless management network. It combines valuable wireless network information to let anybody get data-driven graphical charts. The dashboard retrieves the real-time visualizations including the system usage, wireless channel distribution, AP loading of Top 3 and active clients traffic status which enables IT engineers quickly drill down into specific information.



*Four Steps to Manage AP Cluster with Ease*

The Smart AP Control enhances user experience by providing more user-friendly Web GUI and obvious step-by-step guidance on each related function. Unlike other third-party software, it reduces training time and allows even non-technical users to be able to set up wireless network within minutes.

## Simplified Cluster Management with 4 Steps



### Optimizing Wi-Fi Deployment with Floor Maps

Importing your floor maps and locating each AP or AP group according to the field deployment can save your time and cost of on-site support and monitoring. The AP status represented in real time and its signal heat map is capable of reflecting the actual coverage and helps the administrator to fine-tune the overlapping of the adjacent APs anytime to optimize the wireless network performance.



### Real-time Monitoring to Speed up Network Analysis

The Smart AP Control collects all the traffic statistics of the managed APs and displays both graphical and dynamic data information via graphs, charts and tables, reporting on a significant overview of your wireless network to make the daily monitoring more efficient.



### Browser-based Control on VM Eliminates Limitation of OS

Designed to provide more flexibility, the Smart AP Control utilizes the Oracle virtual box technology to enable to import software image under different OS platforms, capable of operating from anywhere via web browser and network adapter that are able to access managed APs on a DHCP-enabled network, thus controlling multiple APs through single PC, laptop or tablet which eliminates the hardware limitation of general hardware controllers. For better performance and more scalability, users just need to upgrade the personal equipment without replacing the original hardware controller. PLANET Smart AP Control is a value-added software controller which makes your wireless central management solution more efficient without any hardware installation and extra expensive budget.

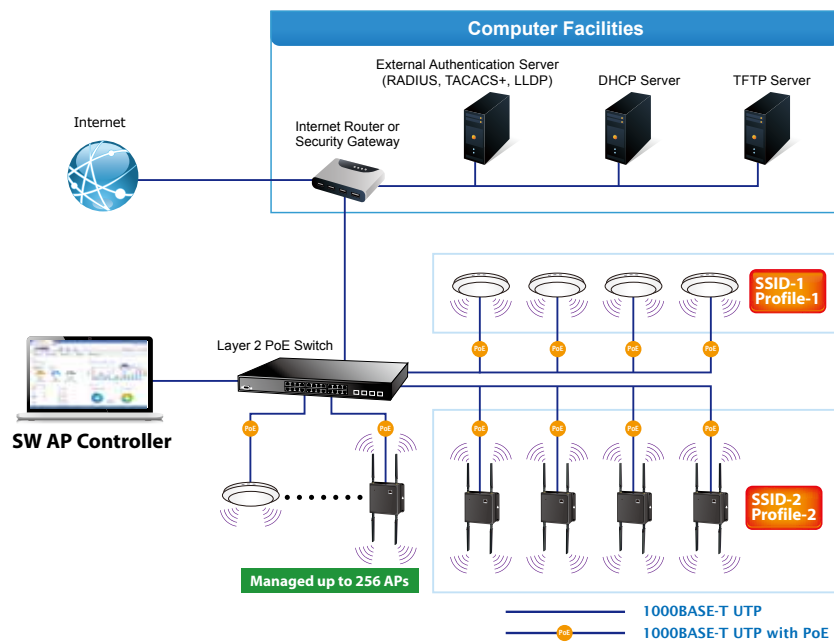
\* Recommend using Chrome browser

## Applications

### Economical AP Central Management Solution for SMBs

PLANET Smart AP Control helps service providers and IT managers control all wireless APs at the same time and enables administrators to effectively manage up to 256 managed wireless access points or 32 AP groups simultaneously without purchasing any AP license, hardware controller and expensive annual subscription fee.

The administrator can automatically discover and configure wireless profiles, batch provisioning/firmware upgrade, customize Wi-Fi planning against floor maps, and monitor all managed APs through single web-based interface. It allows operating across different platforms through virtualization software. Such design avoids the need to configure the wireless APs one by one and provides more profit to SMB users.



AP Management Solutions Comparison:



AP Central Management Solution	WAPC Hardware Controller Series	Smart AP Control
AP Discovery, Status Monitoring	■	■
AP Control, Cluster Management	■	■
RF Profile Creating, Bulk Provisioning	■	■
Bulk Firmware Upgrade	■	■
Floor Plan/Signal Heat Map View	■	■
Built-in DHCP Server	■	□
L2+/L4 IP Management	■	□
PoE Schedule, Alive Check	■	□
Maximum Managed APs	WAPC-1232HP: 32 WAPC-2864HP: 64	256
AP License Fee	\$0	\$0
Annual Subscription Fee	\$0	\$0
Total Cost	Controller + Managed AP	Managed AP

## Specifications

Wireless AP Management Features (with PLANET managed AP series)	
Maximum Managed APs	256
Maximum AP Groups	32
Maximum APs per AP Group	Allows all 256 APs as one group, limited to the same model
Maximum SSID Profiles	32
Maximum Radio Profiles	32
Maximum Concurrent Clients	5000
Maximum Floor Maps	10
Compatible Access Points	<ul style="list-style-type: none"> <li>- WDAP-W7200AC</li> <li>- WDAP-C7200AC</li> <li>- WNAP-C3220A</li> <li>- WNAP-W2201A</li> <li>* update the patch for SAPC_v1.1b180604.tar.gz.enc or Utility for v1.1b180604 can support the following model</li> <li>- WNAP-W2200UE</li> <li>- WDAP-C7200E</li> <li>- WNAP-C3220E</li> <li>- WBS-202N</li> <li>- WDAP-702AC</li> <li>- WBS-502AC</li> <li>- WAP-252N</li> <li>- WBS-502N</li> <li>- WDAP-802AC</li> <li>- WAP-552N</li> <li>- WBS-200N</li> <li>- WAP-200N</li> <li>- WAP-500N</li> <li>- WBS-500N</li> </ul>
Centralized AP Management	<ul style="list-style-type: none"> <li>- AP auto discovery (subnet-based discovery)</li> <li>- AP auto IP assignment</li> <li>- AP group management (bulk provision, upgrade, reboot, LED control)</li> <li>- AP provisioning</li> <li>- AP SSID, radio configuration</li> <li>- AP LED control</li> <li>- AP bulk firmware upgrade</li> <li>- Remote AP power reboot</li> <li>- Floor map view</li> <li>- Floor map import, custom map export*</li> <li>- Real-time AP signal coverage display</li> <li>- Real-time AP and wireless client status monitoring</li> <li>- Real-time graphical statistics view</li> <li>- Real-time wireless channel distribution</li> <li>- Rogue AP detection*</li> <li>- Wireless MAC black list*</li> <li>- Ban clients per AP*</li> <li>- Dashboard view</li> </ul>
Wireless Configurable Features	
Encryption Type	64/128-bit WEP, WPA, WPA-PSK, WPA2, WPA2-PSK, 802.1x Authentication
Wireless Security	Enable/Disable SSID Broadcast AP Isolation
Multiple SSIDs per Frequency Band	Up to 5
RF Control	Output power Auto channel Traffic shaping per frequency band IAPP L2 roaming
System Management Features	
Management Interface	Web-based user interface
System Management	Management IP/port Login account modification System upgrade
System Requirements	
Minimum Hardware Requirements	CPU: Intel Core i3 3.4 GHz dual-core or above RAM: 4 GB minimum HDD: 200 GB (actual requirement is dependent on log size)
OS Supported	Microsoft Windows 7/8/8.1/10 *Mac OS X 10.8/10.9/10.10/10.11 Note: supported OS is dependent on virtualization product
Virtualization	Oracle VirtualBox 5.0 or later
Browser Supported	Internet Explorer 10 or better* Firefox 34.0 or better* Chrome 31.0 or better Safari 8.0 or better*

Remarks: \*New features will be added through system updates.



## Ordering Information

Smart AP Control      Wireless AP Controller Software

Remarks 1: This software is free to download and not for sale.  
 Remarks 2: Compatible with only PLANET managed AP series.

## Related Products

WDAP-W7200AC	1200Mbps 11ac Dual Band Wall-mount Wireless Access Point, Gigabit LAN, 802.3at PoE PD
WDAP-C7200AC	1200Mbps 11ac Dual Band Ceiling-mount Wireless Access Point, Gigabit LAN, 802.3at PoE PD
WNAP-C3220A	300Mbps 11n Ceiling-mount Wireless Access Point, 802.3af/at PoE PD
WNAP-W2201A	300Mbps 11n In-wall Wireless Access Point, 802.af/at PoE PD, 1 x RJ11
WNAP-W2200UE	300Mbps 802.11n In-Wall Wireless Access Point w/ USB Charger (EU Type, 802.3af/at)
WDAP-C7200E	1200Mbps 802.11ac Dual Band Ceiling-mount Wireless Access Point (802.3at PoE, 2 10/100/1000T LAN)
WNAP-C3220E	300Mbps 802.11n Ceiling-mount Wireless Access Point (802.3af/at PoE, 10/100TX LAN)
WBS-202N	2.4GHz 802.11n 300Mbps Outdoor Wireless CPE
WBS-502N	5GHz 802.11n 300Mbps Outdoor Wireless CPE
WDAP-702AC	1200Mbps Dual Band 802.11ac Outdoor Wireless AP
WDAP-802AC	1200Mbps Dual Band 802.11ac Outdoor Wireless AP (IP68, 802.3at PoE+, 4 x N-Type connector)
WBS-502AC	900Mbps 802.11ac Outdoor Wireless CPE
WAP-552N	5GHz 802.11a/n 300Mbps Outdoor Wireless AP (IP67, 802.3af/at PoE, 2 x N-Type Connector)
WAP-252N	2.4GHz 802.11n 300Mbps Outdoor Wireless AP (IP67, 802.3af/at PoE, 2 x N-Type Connector)
WBS-200N	300Mbps 802.11n Outdoor Wireless CPE
WAP-200N	2.4GHz 300Mbps 802.11n Outdoor Wireless AP (2 x 5dBi Detachable Antenna with RP-SMA Connector)
WAP-500N	5GHz 300Mbps 802.11n Outdoor Wireless AP (2 x 5dBi Detachable Antenna with RP-SMA Connector)
WBS-500N	5GHz 300Mbps 802.11n Outdoor Wireless CPE (Built-in 10dBi Antenna)